

**VELVAL COLOUR**  
Power to imagine

**fac alu**  
ALU FOR PROFESSIONALS

# DUST & FIRE

Sculpt your vision out of colours

CERAMIC STYLE



## The manufacturing leader with coating solutions for building sustainability and green materials **Your partner to unique façade creation**

Elval Colour products, **etalbond®**, **ENF™** and **orofe®**, can be coated in any colour together with special functional coatings, **agraphon®** and **arypon®**, each having an invaluable contribution to sustainable green building design.

A sustainable building envelope results in a significant reduction of the primary energy consumption of a building for heating, cooling and maintenance, while contributes to improved appearance and longevity of the façade, roof and building envelope in general. In Elval Colour, we have developed a series of products that are committed to the improvement of the environmental performance of buildings, increase the sustainability of building façades and roofing, and reduce their impact on the environment by being **fully recyclable** at any production step and at the end of their life as well.

With more than 40 years of experience in aluminium coating and colour matching, we can provide you with **reliable advice** in **product specification** and **selection to match the needs of the project or application** you undertake.

Our **personnel** are dedicated to seeing every step of the process through, from production to full delivery, and ready to contribute to the realisation of any architectural vision.

Our products are available with several **functional surfaces** that contribute to **scratch resistance, superior weathering performance, easy-clean, anti-graffiti, textured**, and come in many shades to match your creativity and imagination. They are ideal for new and renovation projects.

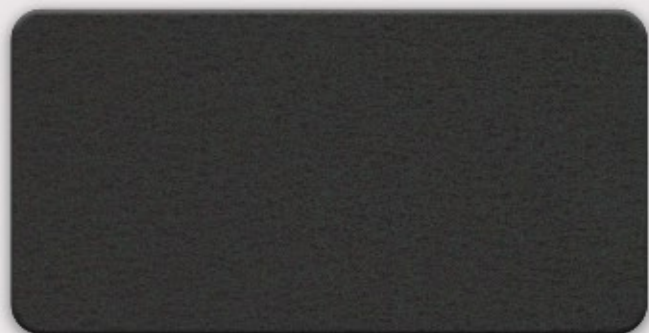
*Elval Colour coatings are:*

- Lead (Pb), Chrome (Cr) and Isophorone (IF) Free
  - REACH compliant as per 1907/2006/EU
  - RoHS compliant as per the Restriction of Hazardous Substances Directive 2002/95/EU
- Our coating process complies with all European norms and quality standards BREF, DIN, ASTM, BS, EN, ISO and ECCA, has a zero liquid waste discharge system and is fully compliant with the Industrial Emissions' Directive (IED) 2010/75/EU.*

For more information & guidelines, please contact us:  
**[www.elval-colour.com/en/contact](http://www.elval-colour.com/en/contact)**

The presented colour collection is based on metal chips, cut out from real aluminium coils. Therefore, they are well placed as reference optical shade samples. As with all coating procedures, there might be a small degree of colour variation from batch to batch. In order to ensure colour consistency, we recommend placing a project order in one batch. All metallic and textured colours have to be installed following the arrow direction printed on the protective film and on the backside of the panel & coils in order to avoid colour variation. For etalbond® the enclosed colours are available in standard widths from 1000mm to 1500mm. Custom widths are also available upon request up to 2000mm. For ENF™ and orofe® products, the enclosed colours can be ordered in standard widths 600/1000/1250/1500mm, starting from a minimum order quantity of 1500m² per width and thickness.





TX Anthracite

920



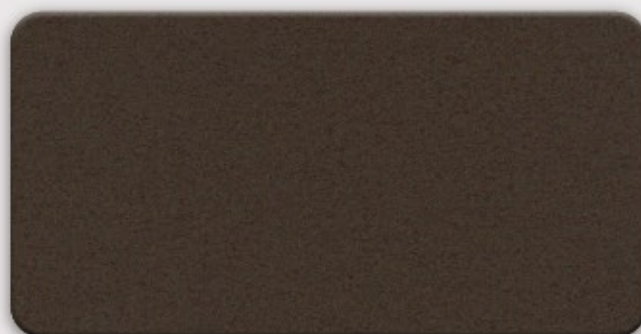
TX Ceramic Red

921



TX Alpine Grey

923



TX Olive Brown

919



TX Velvet Grey

924



TX Metallic Grau

922



TX Velvet Zinc

925



TX Velvet Basalt

926



# fac alu

Elval Colour

3<sup>rd</sup> Km Inofyta Peripheral Rd.

32011, Saint Thomas, Viotia, Greece

tel: +30 22620 53564, fax: +30 22620 53581

ecs@elval-colour.com

**www.elval-colour.com**



**ELVAL COLOUR**  
Power to imagine